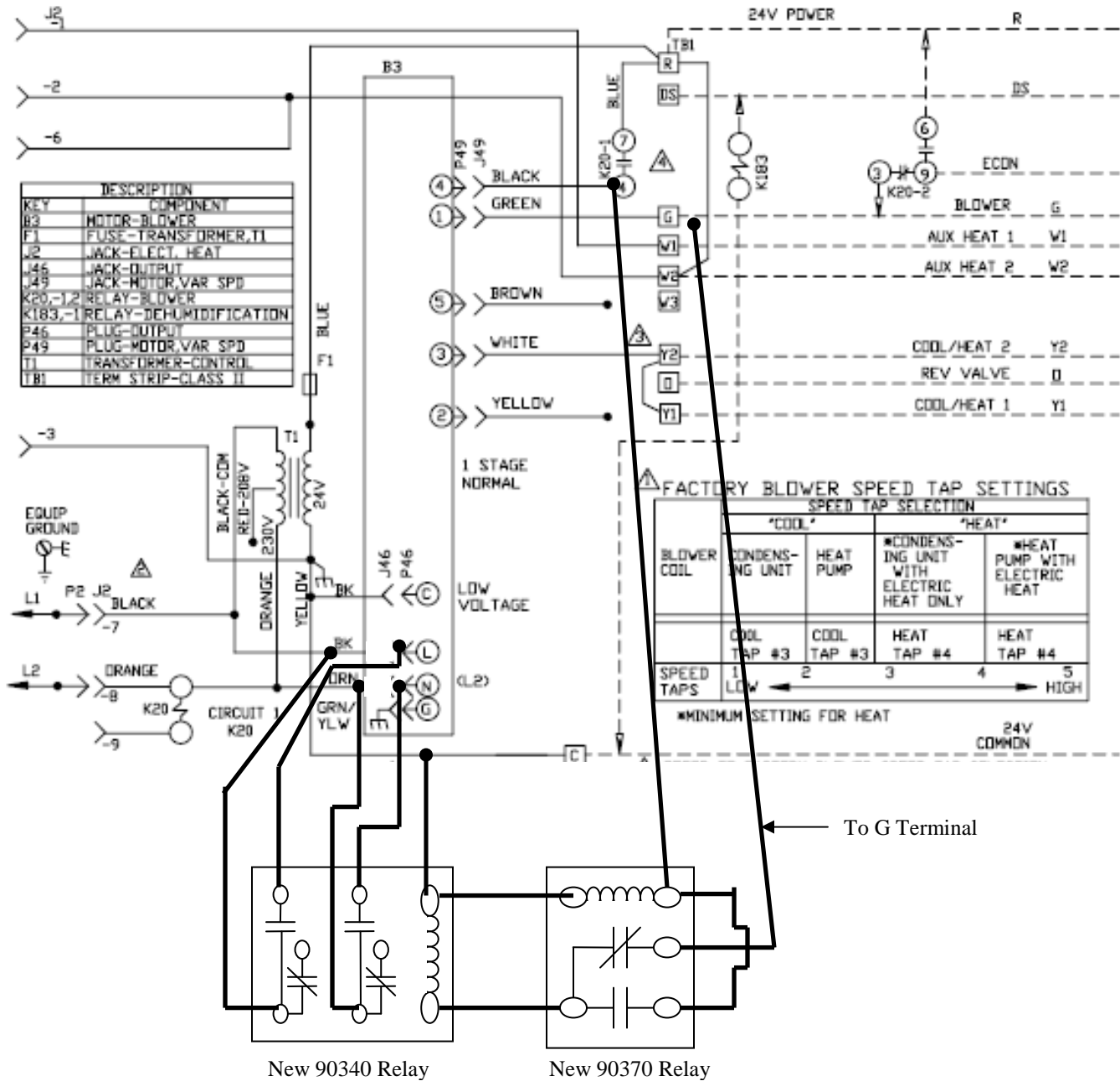


Lennox CB27 All Installs



The 90340 Relay is installed to kill the power to the blower section breaking the high voltage leads to the motor. This kills the blower as soon as the call for blower is eliminated. The system has a normal off delay of 45 seconds if this is not done. The 90370 relay is energized by the black lead from the heat fan speed relay going to the blower control to terminal 4. The Normally closed contact on the 90370 relay is connected to the G terminal on the unit.